

## **PRACTICAL INFORMATION**

### **The 1<sup>st</sup> Senior Officials' Meeting for the 6<sup>th</sup> ASEM Education Ministers' Meeting**

**9-10 November 2016**  
**Seoul, the Republic of Korea**

The Ministry of Education of the Republic of Korea is pleased to invite ASEM partners and stakeholders to the 1<sup>st</sup> Senior Officials' Meeting (SOM1) for the 6<sup>th</sup> ASEM Education Ministers' Meeting (ASEMME6).

### **Date and Venue**

**The 1<sup>st</sup> Senior Officials' Meeting** for the 6<sup>th</sup> ASEM Education Ministers' Meeting will be held on **9-10 November 2016**, at Hotel Shilla in Seoul, the Republic of Korea.

#### **Hotel Shilla**

249, Dongho-ro, Jung-gu, Seoul 100-856, Republic of Korea

Tel : +82-2-2233-3131

Fax : +82-2-2230-3769

Website : <http://www.shilla.net/seoul>

### **Bilateral Meetings and Working Group Meetings**

Meeting rooms for bilateral meetings and working group meetings will be provided for those who want to have bilateral or working group meetings on the sidelines of the SOM1. They are kindly invited to make a reservation by filling in the meeting room request form on the following website:

<http://www.asemme6.kr>

Please take into account that the meeting rooms will be assigned on a first-come-first-served basis

In case of cancellation of the meeting, the notification should be immediately sent to us by e-mail: [asemme6@moe.go.kr](mailto:asemme6@moe.go.kr)

## Registration

Online registration for the 1<sup>st</sup> Senior Officials' Meeting (SOM1) is now open until 27 October 2016 on the following website:

<http://www.aseemme6.kr>

Delegates are kindly asked to fill in the registration form and make hotel reservation on the website above. During the registration process, to ensure timely and appropriate distribution of working documents including discussion paper and other relevant information, participants are kindly asked to nominate the contact persons in the process of the online registration.

Participants will be able to receive their identification badges at the registration desk at the venue. Please note that the access to the meeting room will be restricted to those wearing their identification badges.

Please do not hesitate to contact us should you have any questions about registration:  
[aseemme6@moe.go.kr](mailto:aseemme6@moe.go.kr)

## Visa

Visa application fees are to be covered by participants themselves. The information of visa application can be found at the following link:

[http://www.mofa.go.kr/ENG/visa/application/index.jsp?menu=m\\_40\\_10](http://www.mofa.go.kr/ENG/visa/application/index.jsp?menu=m_40_10)

More information on visa can be found at the following link:

<http://www.visa.go.kr>

## Formal Dinner and Cultural Event

All delegates are cordially invited to join the Formal Dinner at *Yeong Bin Gwan* at Hotel Shilla and the cultural event around Seoul. Transportation will be provided for the tour.



*Yeong Bin Gwan*

## Accommodation

Special discounted room rates will be arranged for the delegates. Delegates can book a hotel by the link of the online reservation system of the respective hotel at the following website:  
<http://www.aseemme6.kr>

The following accommodation options are available for the SOM1:

Hotel	Room Type	Room Rate per room/per night (including breakfast and VAT & SVC)
<b>Hotel Shilla, 5*****</b> (Venue of the meeting)	Deluxe Double	KRW 266,200
<b>Grand Ambassador Seoul, 5*****</b> (7 min. by walk from the venue)	Superior King	KRW 192,500
<b>KY-Heritage Hotel, 4****</b> (12 min. by walk from the venue)	Standard King	KRW 121,000
	Deluxe King	KRW 143,000
	Deluxe Twin	KRW 143,000
<b>The Summit Hotel Seoul, 4****</b> (10 min. by walk from the venue)	Standard Double	KRW 110,000
	Standard Twin	KRW 110,000
	Deluxe Twin	KRW 132,000

### Hotel Shilla

249, Dongho-ro, Jung-gu, Seoul 100-856, Republic of Korea

Tel : +82-2-2233-3131 | Fax : +82-2-2230-3769

Website : <http://www.shilla.net/seoul>



Complimentary use of the fitness club  
Complimentary use of indoor swimming pool  
Charged service for the use of the sauna  
Free parking during stay.  
Charged baby-sitting service

55-inch Smart TV(Satellite TV, 52 channels)  
Free 300Mbps high-speed wired and wireless internet  
Both 220V and 110V available  
Complimentary teabags  
Extra Bed - 30,000 / bed  
Baby Crib (free of charge)

**Grand Ambassador Seoul associated with Pullman**

287, Dongho-ro, Jung-gu, Seoul 04618, Republic of Korea

Tel : +82-2-2275-1101 | Fax : +82-2-2272-0773

Website : <http://grand.ambatel.com/>



Complimentary use of the fitness club  
Complimentary use of indoor swimming pool  
Charged service for the use of the sauna  
Free parking during stay

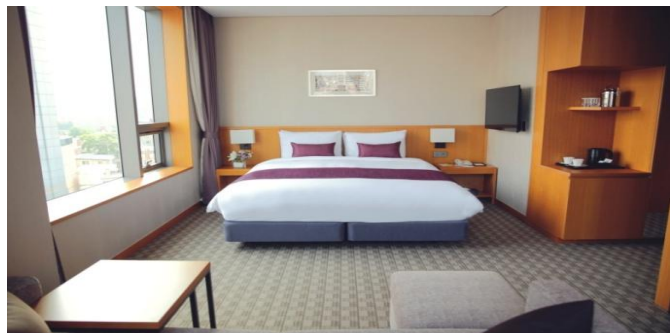
40-inch LCD TV(Satellite TV, 62 channels)  
Free high-speed internet & Wif-Fi  
Both 220V and 110V available  
Two Nespresso Coffee Capsules per day  
Extra Bed - \60,500 per bed  
Baby Crib (free of charge)

**KY-Heritage Hotel Dongdaemun**

226, Jangchungdan-ro, Jung-gu, Seoul, 04565 Korea

Tel : +82-2-2198-1212 | Fax : +82-2-2268-3067

Website : [www.ky-heritagehotel.com](http://www.ky-heritagehotel.com)



Free use of fitness center (24hours)  
All-day dining Restaurant (Le Chef - Italian)  
Airport Limousine Bus (In front of Hotel)  
Nearest Subway (Dongdaemun History & Culture Park Station, Lines 2, 4, and 5)

Premium bedding set  
Bed type & size (King bed 1800\*2060)  
40-inch LED TV (60 satellite, cable channels)  
Free wired/ wireless high speed internet service  
Complimentary mineral water, coffee and tea



## The Summit Hotel Seoul

31-7, 1Ga, Jangchung-dong Jung-gu, Seoul, 100-391, Republic of Korea

Tel : +82-2-2285-0540 | Fax : +82-2-2285-0549

Website : <http://www.summithotelseoul.com>



Complimentary use of the fitness club  
 Complimentary use of the business center  
 10 minute walk to shilla hotel (Venue)  
 Charged the of airport limousine service  
 Personal safebox

32-inch LED TV(Satellite TV, 45 channels)  
 high-speed wireless internet access is complimentary  
 Both 220V and 110V available  
 Complimentary mineral water  
 Extra Bed - ₩33,000 KRW (10% tax included)

A Shuttle bus service between the venue and the other hotels will be provided free-of-charge to all participants in the SOM1.

Delegations will be responsible for all costs related to the accommodation during their stay. Should you have queries related to accommodation, please do not hesitate to contact directly the respective hotel or send an email to [asemme6@moe.go.kr](mailto:asemme6@moe.go.kr).

## Hotel Location



## Transportation

### From Incheon International Airport to the Venue and Hotels

#### By KAL Limousine Bus

Using KAL Limousine Bus is the most convenient way to get to the venue (Hotel Shilla) and the other hotels above. All hotels above including the venue are on the route of KAL Limousine Bus **(No. 6702)**. The bus stop is located at **Exit No. 4A or Exit No. 10B** on the 1<sup>st</sup> floor. The journey takes about 90 minutes. The Bus fare is **KRW 16,000** per person.

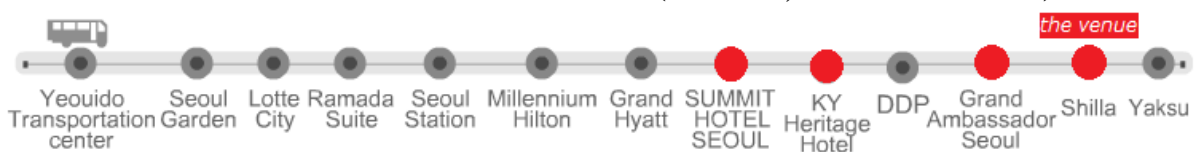


Tickets will be available from the guide at the bus stop or the KAL Limousine counter located in the arrival hall between Exit No. 4 and No. 5. Credit card is available at KAL Limousine counter.

Departure Time (Exit No. 4A)					
05:10	06:00	06:47	07:20	07:51	08:20
08:52	09:27	09:54	10:28	10:54	11:24
11:55	12:23	12:55	13:21	13:55	14:25
14:53	15:21	15:55	16:25	16:55	17:19
17:49	18:16	18:44	19:15	19:41	20:14
20:44	21:15	21:44	22:13	22:44	

**Please NOTE : The Departure Time at Exit No. 10B is 4 minutes later than Exit No. 4A.**

#### The route of the KAL Limousine Bus (No. 6702, Mt. Namsan Area)



Participants can find more information about KAL Limousine Bus schedule on the website:  
[http://www.kallimousine.com/eng/schedule\\_en.asp](http://www.kallimousine.com/eng/schedule_en.asp)

### **By Taxi**

Deluxe Taxi : about one hour (approx. KRW 100,000 – toll fees included)

Normal Taxi : about one hour (approx. KRW 70,000 – toll fees included)

## **Official Language**

The Official language of the meeting is English

## **General Information**

### **Weather**

The climate of the Republic of Korea is characterized by four distinct seasons: spring, summer, autumn, and winter. The SOM1 is in the middle of autumn. During the SOM1, the average day in Seoul varies from about 7°C to 15°C. The night temperature varies from about -2°C to 6°C.

Probability of precipitation is on average 36% during the SOM1, and the most common forms of precipitation are moderate rain and light rain. More information on the weather can be found at the following link:

<http://web.kma.go.kr/eng/index.jsp>

### **Local time**

Standard Time in Korea is 9 hours ahead of Greenwich Mean Time (GMT+9)

### **Mobile Phones Information**

CDMA cellular systems are widely used in the Republic of Korea. SK Telecom, KT and LG U+ are providing a SIM card roaming service to allow participants to use their GSM subscription in the Republic of Korea. At the Incheon International Airport, participants can rent a special CDMA cellular phone which accepts your SIM card. For more details, please check the following links:

SK Telecom roaming service: <http://www.sktelecom.com/en/main/index.do>

KT roaming service: <http://roaming.kt.com/renewal/eng/main.asp?channel>

LG U+ roaming service: <http://www.uplus.co.kr/com/main/pemain/Pemain.hpi>

## Power Supply



The standard power supply in the Republic of Korea is **220 volts at 60 Hz**. This power socket can be identified by two circular adjacent holes. An adaptor for the round two-pin sockets may be required.

## ATMs and Credit Cards

There are many automatic teller machines (ATMs) in Seoul and all major credit cards are accepted almost everywhere. Cards with the Plus and Cirrus logos are the easiest to use ATMs and most widely accepted in Korea.

## Foreign Exchange and Banking

There are plenty of places in the Republic of Korea to change currencies, including airports, banks, authorized currency exchanges and major hotels. The monetary unit is the Won (KRW, denoted by ₩). Korean monetary units are 10, 50, 100, and 500 coins, and 1,000, 5,000, 10,000 and 50,000 notes. All major credit cards such as American Express, Visa and Master Card are accepted for payment of hotel bills. Banks are open from 09:00 to 16:00 on weekdays and closed on Saturdays and Sundays.

Exchange Rate as of 28 August in 2016	
USD 1	KRW 1,114.80
EUR 1	KRW 1,259.84
JPY 1	KRW 11.12
CNY 1	KRW 166.90

## BBB (Before Babel Brigade): Volunteer Interpretation Service

Whenever and wherever you encounter communication problems with Koreans, just call 1588-5644 and press a number for your preferred language. Your call will be quickly connected to a BBB volunteer's mobile phone through an automated switchboard, and you will soon receive interpretation service. The service is available in 19 languages: English, Chinese, Japanese, French, Spanish, Italian, Russian, German, Portuguese, Arabic, Polish, Turkish, Swedish, Thai, Vietnamese, Indonesian, Mongolian, Hindi and Malaysian. The more information on the service can be found at the website: <http://www.bbbkorea.org>



---

## Useful Information and Emergency

Dial code for the Republic of Korea: **+82**

Area code for Seoul: **02**

Emergency: **call 112 (police), 119 (fire and medical emergency)**

International call: **the international access code (001, 002 or 008) + the country code + area code + the recipient's number**

## Useful Websites

Useful information about Seoul: <http://english.visitseoul.net>

Gateway to Korea: <http://www.korea.net>

## Contact Persons

### Oh, Eungseok

Director

Task Force for ASEM Education Ministers' Meeting

Phone: +82-44-203-7115

Mobile phone: +82-10-5230-2033

E-mail: [asemme6@moe.go.kr](mailto:asemme6@moe.go.kr) ; [esoh72@moe.go.kr](mailto:esoh72@moe.go.kr)

### Nam, Yoonchul

Deputy Director

Task Force for ASEM Education Ministers' Meeting

Phone: +82-44-203-6727

Mobile phone: +82-10-3456-0085

E-mail: [asemme6@moe.go.kr](mailto:asemme6@moe.go.kr) ; [nyc111@moe.go.kr](mailto:nyc111@moe.go.kr)

### Woo, Yeonsun

Deputy Director

Task Force for ASEM Education Ministers' Meeting

Phone: +82-44-203-6772

Mobile phone: +82-10-4249-1976

E-mail: [asemme6@moe.go.kr](mailto:asemme6@moe.go.kr) ; [platina404@moe.go.kr](mailto:platina404@moe.go.kr)

### Seo, Hyeseong

Assistant Director

Task Force for ASEM Education Ministers' Meeting

Phone: +82-44-203-7116

Mobile phone: +82-10-4708-9323

E-mail: [asemme6@moe.go.kr](mailto:asemme6@moe.go.kr) ; [comet19@moe.go.kr](mailto:comet19@moe.go.kr)