

1<sup>st</sup> Senior Officials' Meeting (SOM1)  
in Bucharest, Romania on 18-19 November 2025



Asia-Europe Meeting

ASEM Education

## 5. Presentation of the Concept for the **10<sup>th</sup> Asia-Europe Meeting of Ministers for Education (ASEMME10) in 2026 in the Philippines**

**Commissioner Dr. Michelle Aguilar Ong**

Commission on Higher Education, The Philippines



# **ASEMME10 & SOM2 in the Philippines**

---

**Commissioner Michelle Aguilar Ong**

**Commission on Higher Education**

ASEM Education 1st Senior Officials' Meeting (SOM1)

November 18-19, 2025

Bucharest, Romania

# BLUE ECONOMY: A SHARED FUTURE

## Philippines & Europe's Coastal Challenge

- Archipelago: 80% Marine  
2/3 Coastal Population  
2M+ Livelihoods from Sea

- Warming Seas
- Changing Currents  
Shifting Fish Stocks

OUR FUTURE IS TIED TO WATER.

# Building Bridges in Higher Education: ASEAN & Europe



## The Regional Vision

ASEAN's new declaration on higher education aims for an inclusive, sustainable, and prosperous region through "lifelong and life-wide learning."



## Mobility with Quality

Focusing on equivalency and quality assurance so students don't "start from scratch," ensuring mobility \*raises\* standards, not dilutes them.



## A Shared Framework

These principles guide Philippine reforms and cooperation with Europe, framing the 2026 ASEM Education Meeting & ASEAN Chairmanship.

# From Tuna to Resilience: A Shared Blue Economy



## The Tuna Connection

PH tuna (over \$500M) reaches EU markets via GSP+. A single product tells a story of our interconnected supply chains and shared standards.



## Shared Vulnerability

The EU's 3.6M blue-economy jobs and the PH's coastal livelihoods are on the front lines, facing the same threats from rising sea levels and extreme weather.



## Complementary Solutions

By merging PH's community-based mitigation (e.g., mangrove rehab) with Europe's science-based management, we create a climate-resilient blue economy.



# Our Shared Health Workforce: A New Framework

The logo consists of the characters '1M+' in a bold, dark blue, sans-serif font. The '1' and 'M' are connected, and the '+' is a simple cross shape.

Estimated EU Health Worker Gap

## The Shared Challenge

The EU faces significant shortages, increasing reliance on foreign-trained professionals—many from the Philippines—to achieve universal health coverage.

## From Strain to Balance

This mobility, while providing opportunities, places a strain on our own system. We must move to balanced, co-designed arrangements with monitored impact.

## The ASEM Goal

The question is how to shape mobility so health systems in **both** our regions remain strong.





# Background

The **Philippines**, as host of the **10th ASEM Education Ministers' Meeting (ASEMME10)** and the **2nd Senior Officials' Meeting (SOM2)** in **2026**, seeks to convene ministers, senior officials, and stakeholders from across both regions to assess achievements, discuss future directions, and reaffirm shared commitments under the ASEM Education Strategy.

The 2026 meetings are envisioned as a culminating milestone in the Philippines' leadership within ASEAN and involvement in ASEM, advancing international cooperation through education, sustainability, and people-to-people exchange.





# Objectives

- Agreement on the policy orientation of the ASEM Education Process and implementation of initiatives, programmes, and projects
- **Review progress** under the current ASEM Education Strategy 2030 and identify emerging priorities for cooperation. Acknowledgement of the Stocktaking Report “From Valletta to Palawan”.
- **Reaffirm ministerial commitment** to (higher) education as a driver for sustainable development and people-centered regional integration. Adoption of the Chair’s Conclusions.
- **Strengthen partnerships** among ASEM (higher) education partners and stakeholders through side events, networking, and cultural exchanges.







# Proposed Theme:

***“Sustainability and Solidarity:  
Navigating Our Future Together through  
Asia-Europe Higher Education Cooperation”***

---

# Proposed Schedule

DAY	ACTIVITY	DETAILS
Day 1 (Monday)	<b>Arrival and Welcome Dinner</b>	Arrival of delegations; Registration; Welcome Dinner hosted by CHED Chairperson/Secretary of Higher Education; Cultural Presentation highlighting Philippine heritage
Day 2 (Tuesday)	<b>2nd Senior Officials' Meeting (SOM2)</b>	Official opening; Presentations of partners and stakeholders on initiatives and projects Presentation and discussion of the Chair's Conclusions Presentation and discussion of the Stocktaking Report Final Review of the Palawan Declaration;
Day 3 (Wednesday)	<b>ASEMME10 – Opening Ceremony and Ministerial Meeting (Day 1)</b>	High-level opening ceremony; Keynote messages from Asia & European “Sustainability and Solidarity in Higher Education” Tour de table for all Ministers (short statements) on one of the three topics: <b>(1) Blue Economy and Green and Digital Transitions,</b> <b>(2) Lifelong Learning and Inclusion,</b> <b>(3) Mobility and Mutual Recognition</b> Presentation and Discussion of the Chair's Conclusions and Stocktaking Report Bilateral Meetings



# Proposed Schedule

DAY	ACTIVITY	DETAILS
Evening	<b>Gala / Networking Dinner</b>	Hosted by the Government of the Philippines;  Cultural performances and interregional networking to celebrate Asia-Europe partnership
Day 4 (Thursday)	<b>ASEMME10 – Ministerial Meeting (Day 2) and Closing</b>	Stakeholders Panel  Adoption of the Chair’s Conclusions  Adoption of the Palawan Declaration;  Bilateral meetings / Side meetings with stakeholder networks  Press conference
Day 5	Departure of Delegations	Optional site visits for departing delegates (local cultural and environmental learning tours)



# Proposed Outcome Documents

- ASEMME10 Chair's Conclusions
  - Stocktaking Report "*From Valletta to Palawan*"
  - ***Palawan Declaration*** – reaffirming Asia-Europe commitment to sustainable and inclusive higher education cooperation.
-



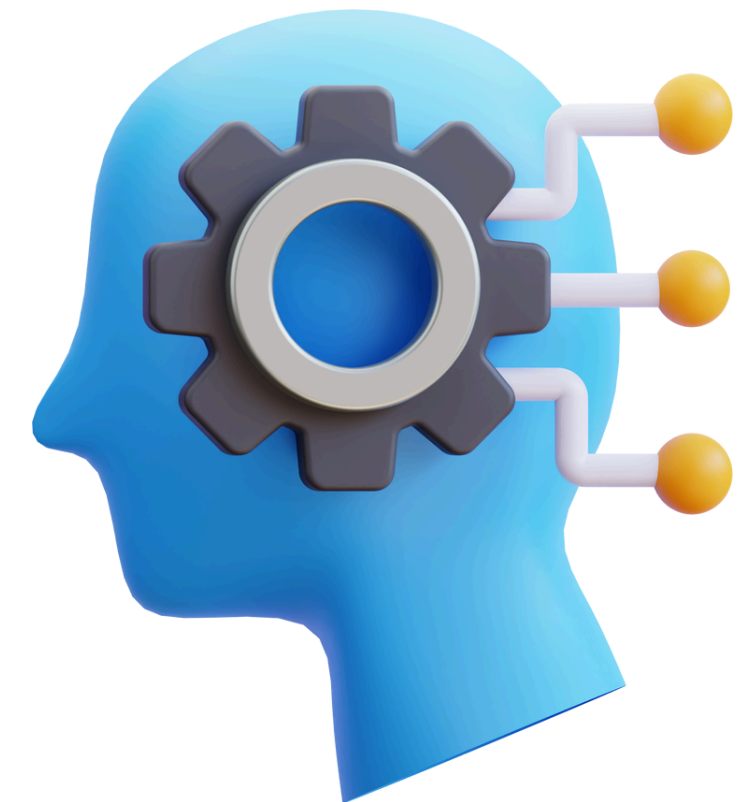
# Ideas for Side Events



Asia-Europe Youth Forum



ASEM Education Fair



Roundtable on Sustainable Mobility  
and Digital Learning



# Palawan

An aerial photograph of a stunning tropical island in Palawan, Philippines. The island is characterized by its dramatic, steep limestone cliffs that rise sharply from the sea. The cliffs are covered in lush green vegetation, with some areas showing vibrant red and orange foliage. A pristine white sandy beach is nestled at the base of the cliffs, where several small boats are anchored. The water is a brilliant turquoise color, transitioning to a deep blue further out. In the background, more islands and a clear blue sky with scattered clouds are visible.

As one of the Philippines' most pristine ecological treasures and a UNESCO Biosphere Reserve, Palawan reflects the country's strong commitment to environmental stewardship, climate resilience, and sustainable development. By holding the meetings in a location where conservation and community-driven sustainability efforts thrive, the Philippines underscores that Asia–Europe higher education cooperation must not only advance academic excellence, but also strengthen our shared responsibility for a sustainable and resilient future.

Date: 1<sup>st</sup> week of December 2026



# PROPOSED VENUE: TAG RESORT, PALAWAN











# *Thank You.*

**See you all in the Philippines next year!**

CHED Central Office



C.P. Garcia Avenue, Diliman, Quezon City



(02) 8441 1168



<https://ched.gov.ph>